



BPM Gentle

Pneumatic Manipulator with Double Rope System



*Gentle Pneumatic Manipulator,
300 kg carrying capacity version,
displayed with a clamp fixture.*

Gentle Pneumatic Manipulators are designed to move operator-centered loads within the work area with minimum effort. It balances the weight of the load, allowing the operator to carry the load quickly and safely.

The balance of the load to be carried is provided by connecting two steel cables to the balance unit. Manipulators, either floor mounted or ceiling mounted. Manipulators are produced with standard hooks, but they can also be produced with special holders designed according to needs. The manipulator, which consists of two arms, has a total of two brakes on the arm rotation axis.

Works with dry, filtrated (40 μm) and oil free compressed air (min. 0.7/0.8 MPa).

300 kg max. weight capacity. **4.500 mm** max. radius. **2.000 mm** vertical lift.
140 nl/min max. air consumption.

Mounting Options

Gentle Column Mounted GY



Gentle Overhead Mounted GT



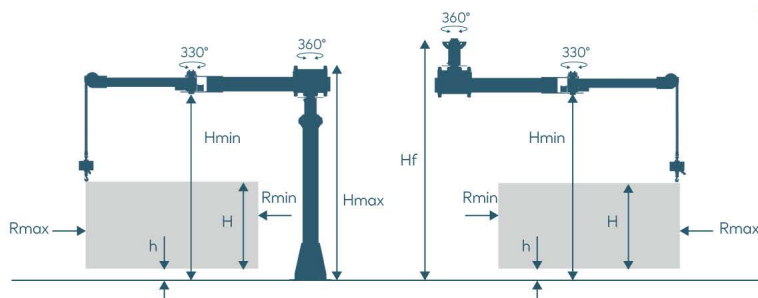
Gentle Overhead Trolley Mounted GTA



Weight Capacity / kg

		Gentle 200				Gentle 300			
		200	200	200	200	300	300	275	250
Max. Radius / mm	Rmax	3000	3500	4000	4500	3000	3500	4000	4500
Min. Radius / mm	Rmin	650	760	870	980	650	760	870	980
Vertical Lift / mm	H	2000	2000	2000	2000	2000	2000	2000	2000
Min. Vertical Lift / mm	*h	200	200	200	200	200	200	200	200
Max. Height / mm	*Hmax	2900	2900	2900	2900	2900	2900	2900	2900
Max. Ceiling Height / mm	*Hf	3300	3300	3300	3300	3300	3300	3300	3300
Min. Height / mm	*Hmin	2550	2550	2550	2550	2550	2550	2550	2550

* Marked dimensions can change according to the customer request.



Mounting Plate Dimensions (mm)

